

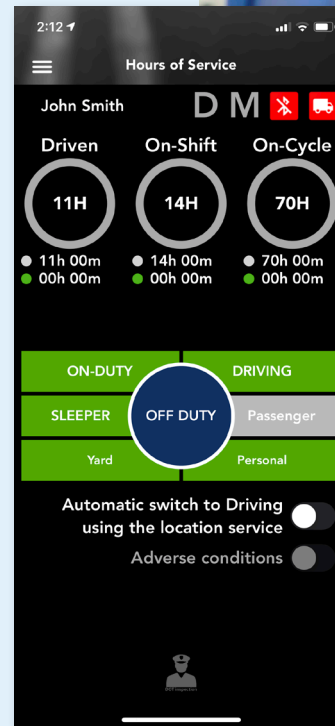
# CalAmp ELD

## Streamline Compliance with User-friendly Electronic Reporting

Carriers and drivers subject to ELD regulations are required to use registered and certified electronic logging devices for tracking, managing, and sharing records of duty service (RODS) data. Those not in compliance are subject to a number of penalties including out-of-service placement, adverse impacts to CSA BASIC scores, and fines.

CalAmp ELD eases the burden of regulatory compliance with a driver-friendly solution adhering to all relevant US federal, intrastate, Canadian, Mexican, and industry-specific regulations. The reliable system captures necessary speed, odometer, GPS, and driver input duty status for display, logging, export, and printed output. Intuitive system alerts help users proactively address issues such as unidentified driving that can trigger potential violations.

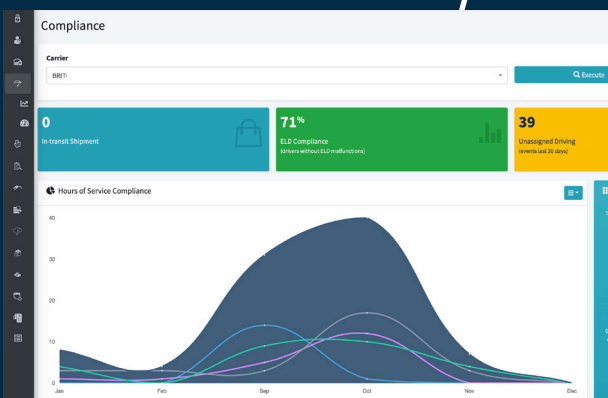
Extensive reporting capabilities curate essential data regarding edited records, unassigned driving, personal conveyance, malfunctions, ECM disconnection, rejected edits, and more.



Multi-language support includes:

French

Spanish

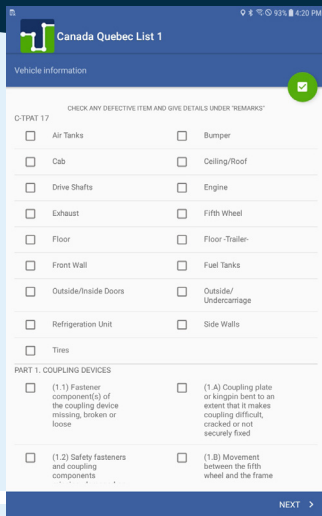


- ✓ Full ELD compliance
- ✓ Intuitive, driver-friendly user experience
- ✓ Streamline DVIR inspections and reporting
- ✓ Eliminate IFTA reporting errors
- ✓ Integrated dispatch capability
- ✓ Small footprint, rugged Android tablet

Cal/Amp®

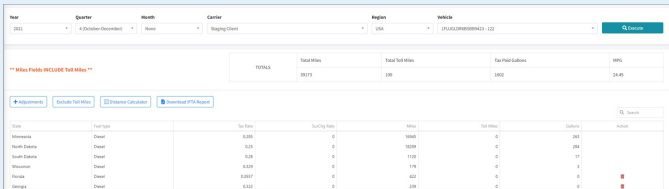
calamp.com

# CalAmp ELD | Streamline Compliance with User-friendly Electronic Reporting



## Electronic DVIR Reporting

Accelerate mandatory DVIR inspections and reporting with pre-populated checklists that guide drivers through the process. Add notes, take photos, attach DTC codes, and capture audit logs to improve clarity and maintain oversight.



## Automated IFTA Reporting

Eliminate missing jurisdictions and errors with automatic fuel capture and detailed electronic IFTA reporting. Ensure full compliance with US, Canadian Schedule 1, Ontario, and Quebec regulations. Simplify administration via the easy-to-navigate, customizable portal.



## A Tablet Built for the Road

The small form-factor, ruggedized 7" Android tablet is purpose-built for industrial use. It features four-foot drop resistance and IP54-rated dust and water resistance for added durability. The high-brightness 1024 x 600 capacitive multi-touch display features optical bonding for readability in high-humidity outdoor environments and can be operated with gloves on. Software is pre-loaded at the factory for faster deployment. The cradle is hardwired directly to your CalAmp LMU device, avoiding connectivity disruptions.

